



# MONTHLY MEMBERSHIP PROGRESS REPORT

Results as of: 5/31/2015

Multiple District 3

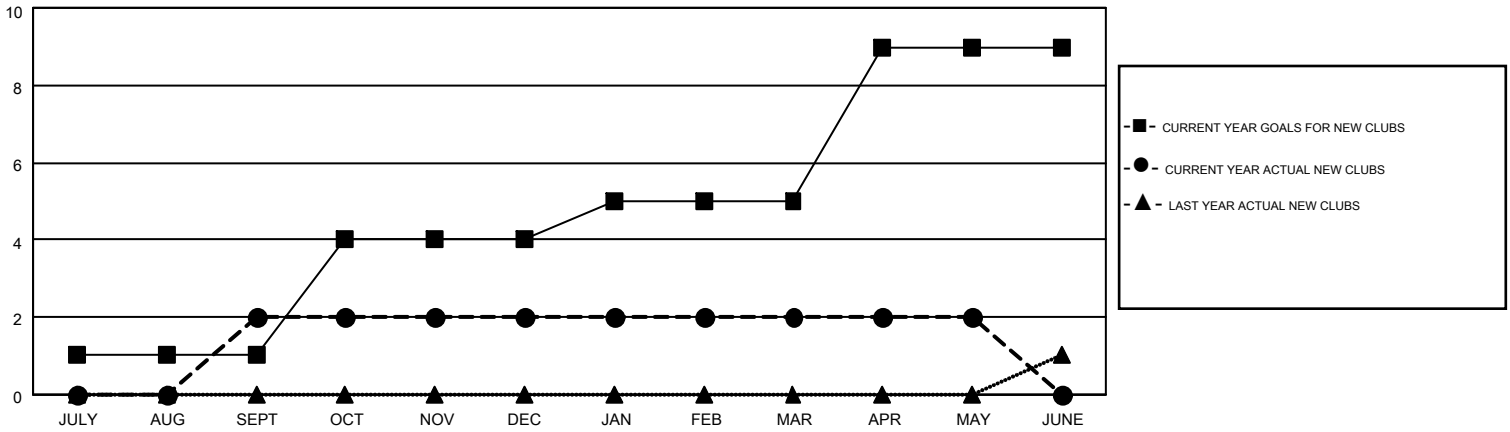
LOCATION: OKLAHOMA

GMT: HAL GRIFFIN

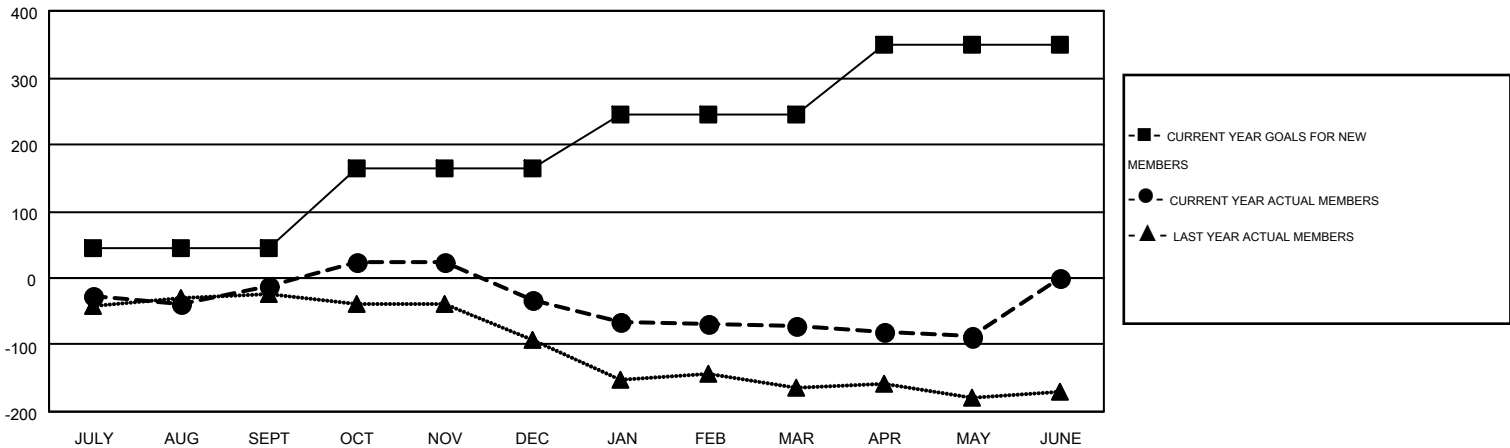
GMT CA 1

Clubs					Members				
RESULTS FOR 2014-2015					RESULTS FOR 2014-2015				
QUARTER	NEW CLUB GOAL	NEW CLUBS	DROPPED CLUBS	NET GAIN/LOSS	QUARTER	NEW MEMBER GOAL	CHARTER AND NEW MEMBERS ADDED	DROPPED MEMBERS	NET GAIN/LOSS
JULY/AUG/SEPT	1	2	1	1	JULY/AUG/SEPT	46	167	178	-11
OCT/NOV/DEC	3	0	2	-2	OCT/NOV/DEC	118	122	143	-21
JAN/FEB/MAR	1	0	0	0	JAN/FEB/MAR	82	124	163	-39
APR/MAY/JUNE	4	0	0	0	APR/MAY/JUNE	103	75	92	-17

GOALS AND ACTUAL NEW CLUBS CUMULATIVE



GOALS AND ACTUAL MEMBERS CUMULATIVE



DROPPED CLUBS: 3	127 CLUBS OF 175 ADDED 1 OR MORE NEW MEMBERS	<u>GENDER DISTRIBUTION</u>	
<u>DROPPED MEMBERS</u>		MALE	3,117 (70.70%)
DECEASED	52	FEMALE	1,292 (29.30%)
CLUB CANCELLED	32	<u>FAMILY UNIT MEMBERS</u> 640	
OTHER	492	<u>HEAD OF HOUSEHOLD</u> 311	
TOTAL	576	<u>NON-HEAD OF HOUSEHOLD</u> 329	

[CLICK HERE FOR HEALTH ASSESSMENT DATA](#)